

****Important****

Please read carefully before filling the radiator with water

Due to a baffle in the bottom header, which is required to maximise the performance of this style of radiator, the vertical versions of the Concord panel should be filled slowly with water ensuring the OPEN air vent is diagonally opposite the flow.

This enables any air in the radiator to be pushed towards the vent which will, in turn, be evacuated properly. Once filled, close the air vent. The system should then be started, warmed, cooled and the radiator vented again.

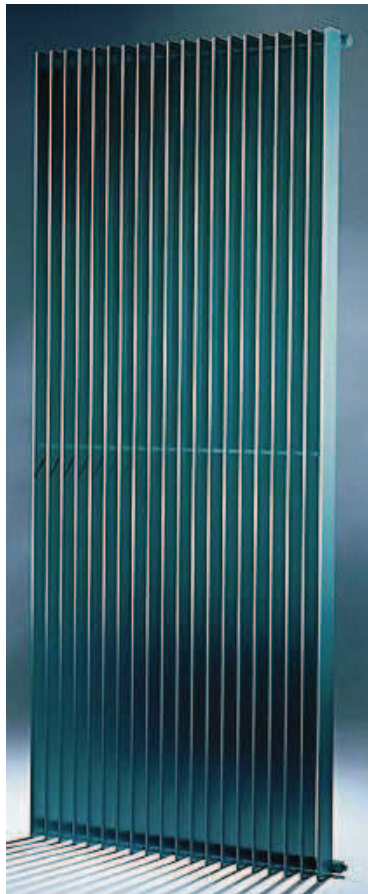
If the radiator is filled too rapidly, trapped air can cause the radiator not to heat up properly.

It is also important for the radiator to be balanced correctly. The lock shield valve should be adjusted to achieve a temperature drop across the radiator of 10-12 degrees C.

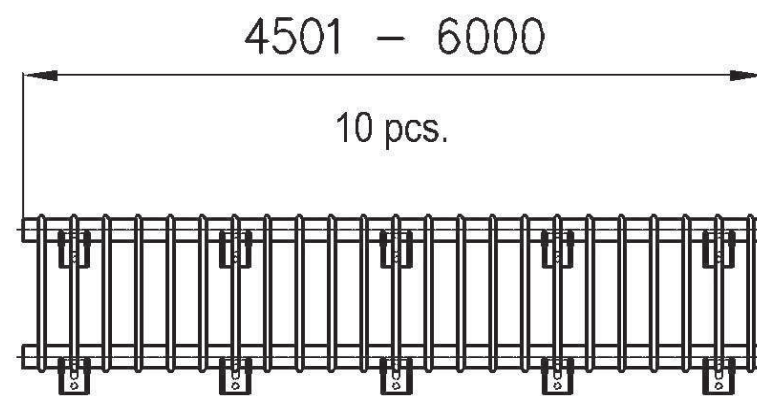
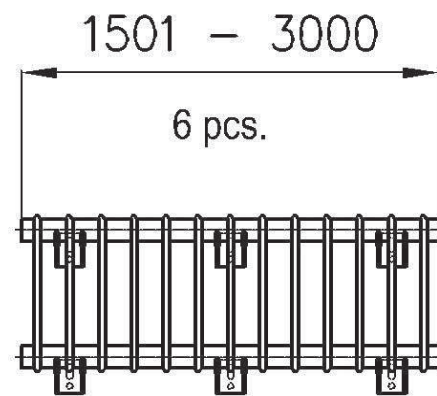
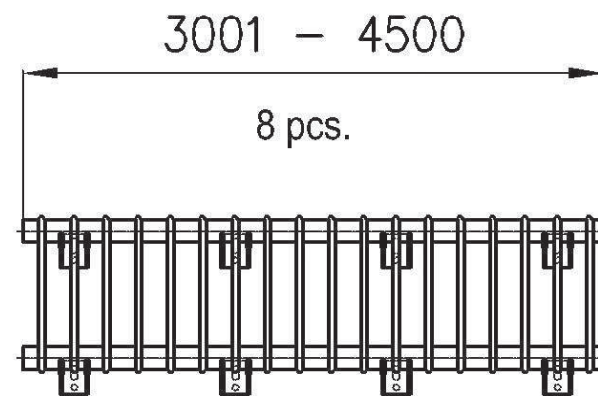
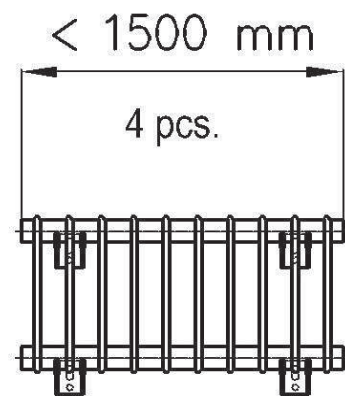
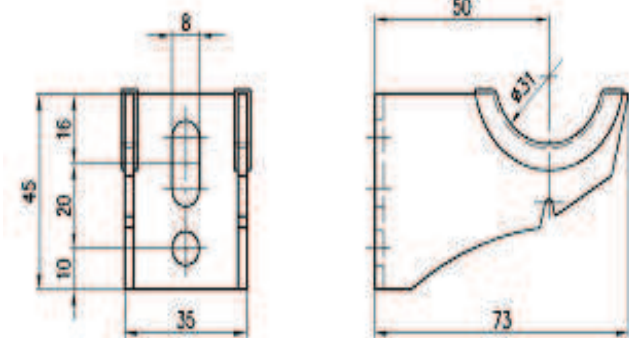
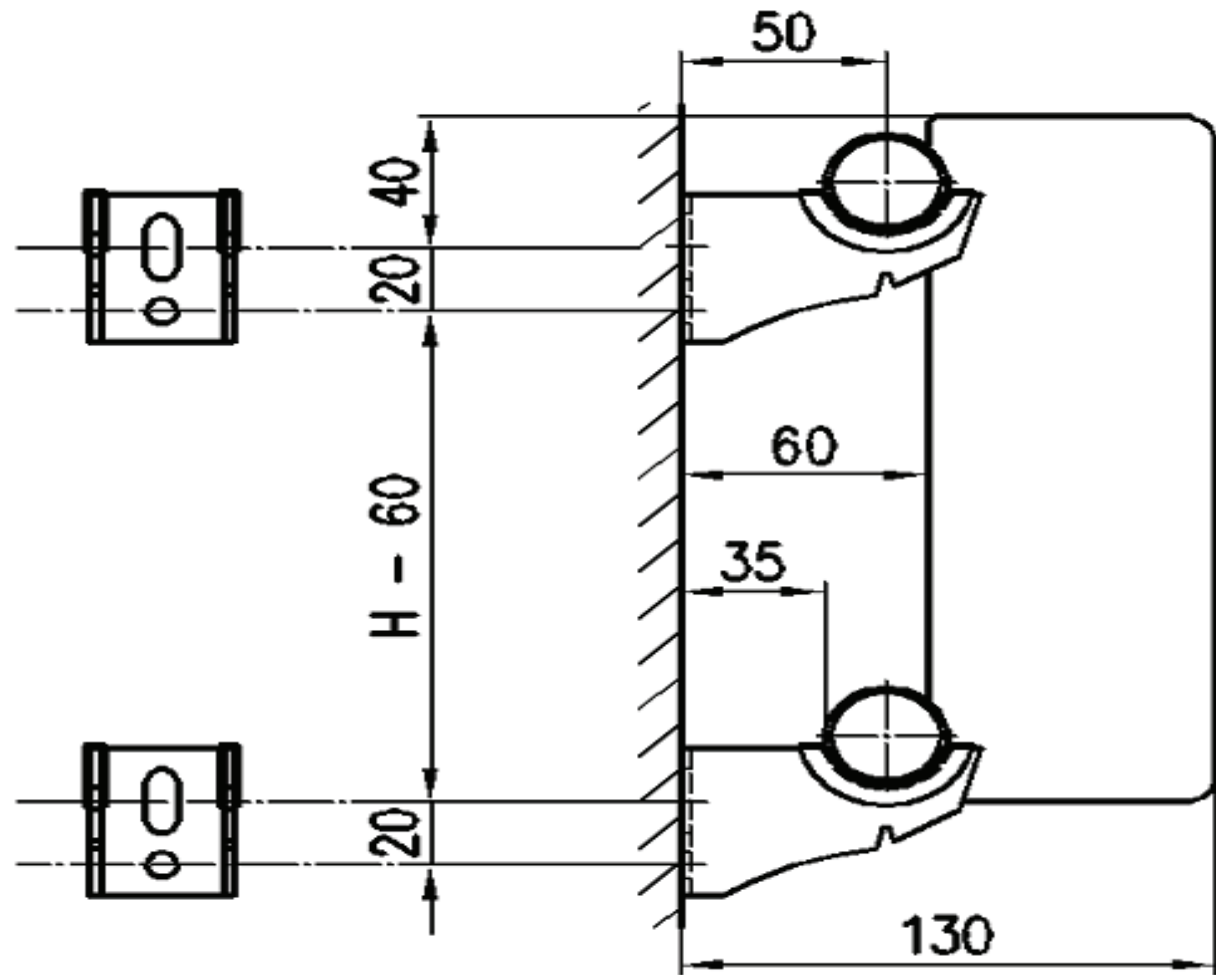
Failure to do this properly, will result in the incorrect flow rate through the radiator resulting in poor output and a noisy radiator.

M-RX

Assembly Instructions



© Copyright by PGR 07/2011 PGR 061



Security Springs

